



**Aim at the ideal town in which the  
person with dementia can live.**

**Kunio Nitta, MD**  
**Medical Corporation Tsukushikai**

# Factors which affect Dementia condition

- 1.dementia
- 2.social factors
- 3.Environmental factors

To prevent  
deterioration

**Medical treatment**  
**Public support**  
**Self-help**  
**Mutual aid**

# The structure of the dementia condition

$$D = P \times B \times H \times NI \times SP$$

D ; Dementia

P ; Personality

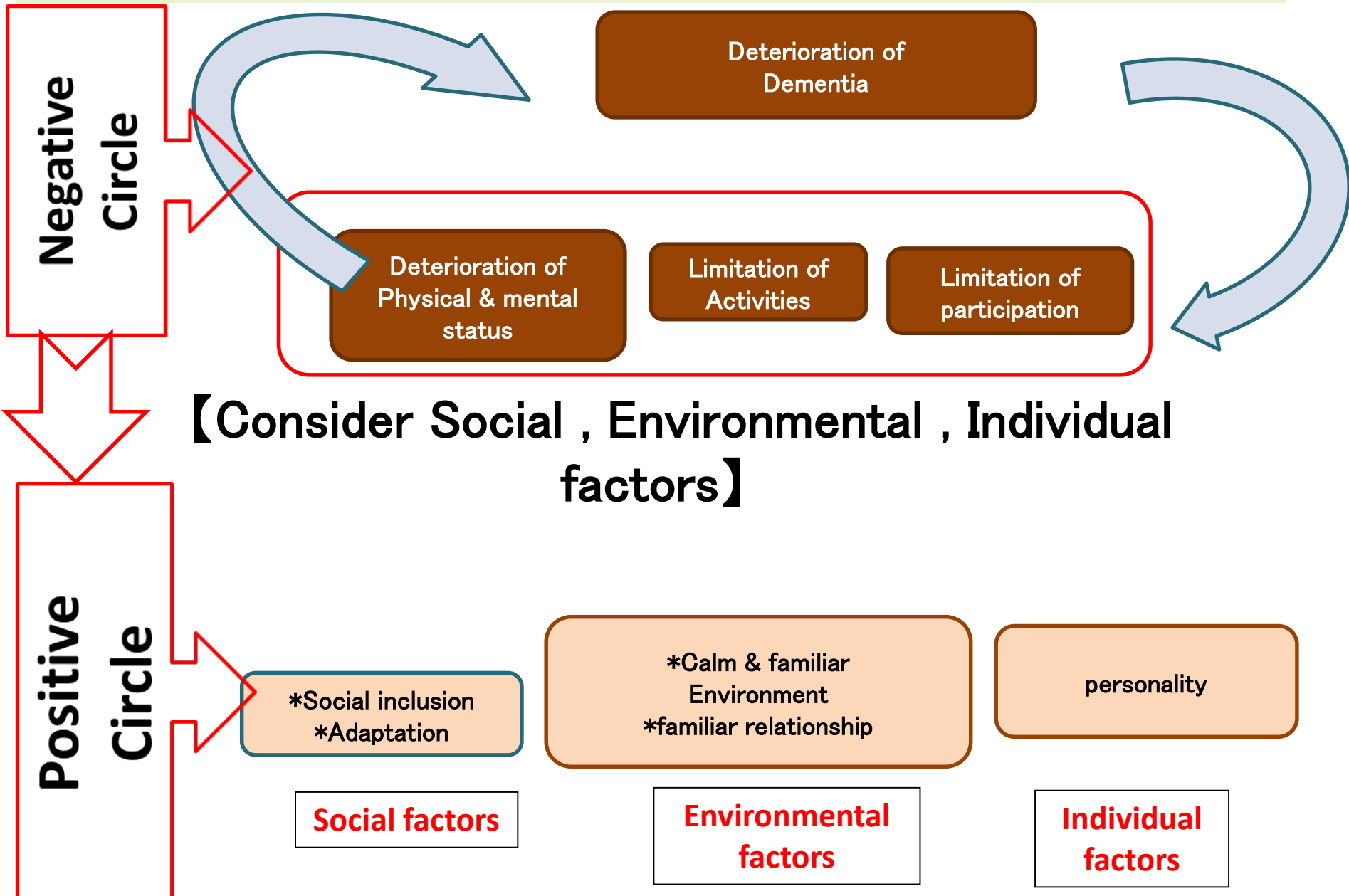
B ; Biography

H ; Physical-health

NI ; Neurological Impairment

SP ; Social Psychology

# ICF ; Positive Circle of Dementia



# To maintain **Dignity** of the person with Dementia – to live as **a whole person** –

**Maintain Dignity  
Aging with Dignity**

**Support  
Independence  
of daily life**

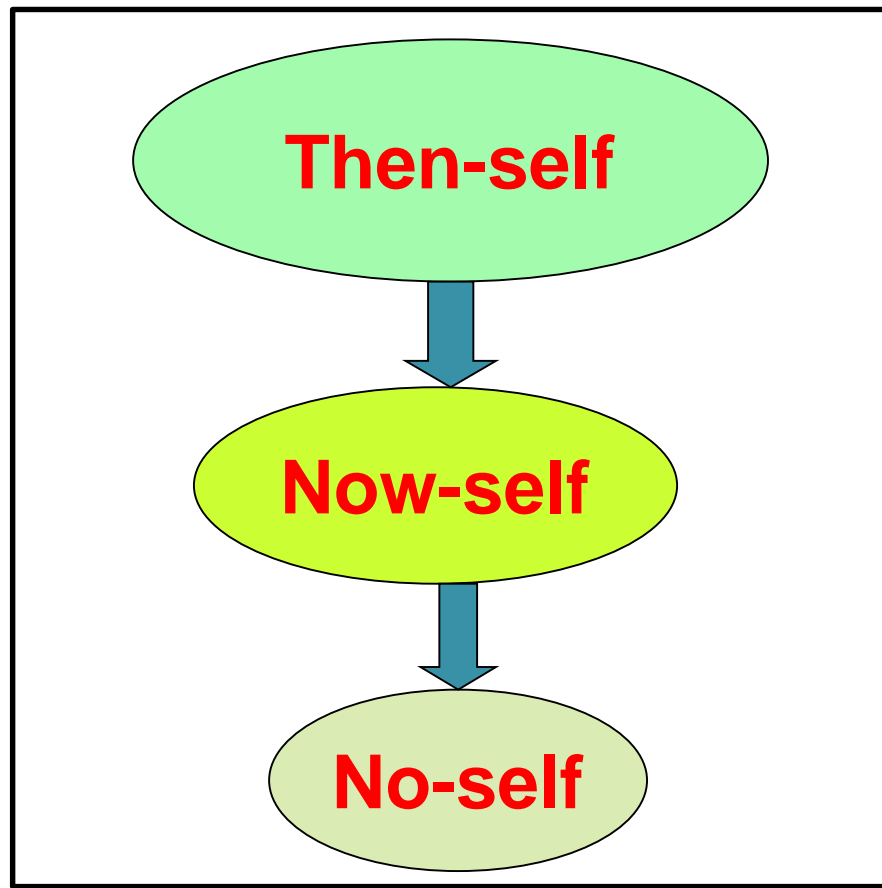
Movement

Eating

Excretion

**Support  
Autonomy**

**Self  
Expression**



Shell  
husk

**NO!NO!**  
Your are still  
Your self!

gone

empty

# Kunitachi City

area approximately 8.15 km<sup>2</sup>

## Population of elderly people

01/04/2014	total	%
total	74,303	—
Over 65	15,716	21.15%
Over 75	7,703	10.3%

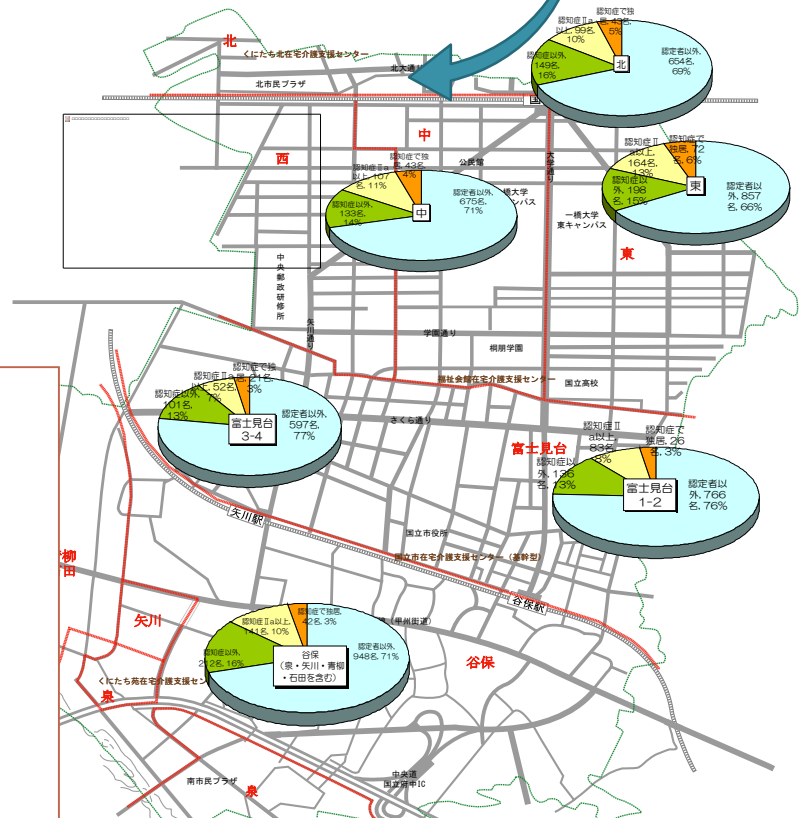
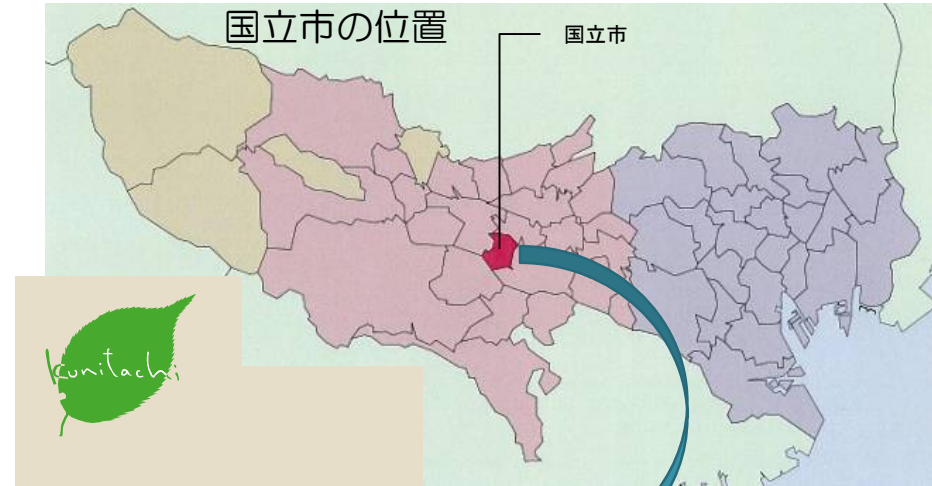
## Number of elderly certified who need nursing care

01/04/2014	人
total	2,994
40~64	92
65~74歳	350
Over 75	2,552

01/2013  
**【over 75 who need home care】 7,282**

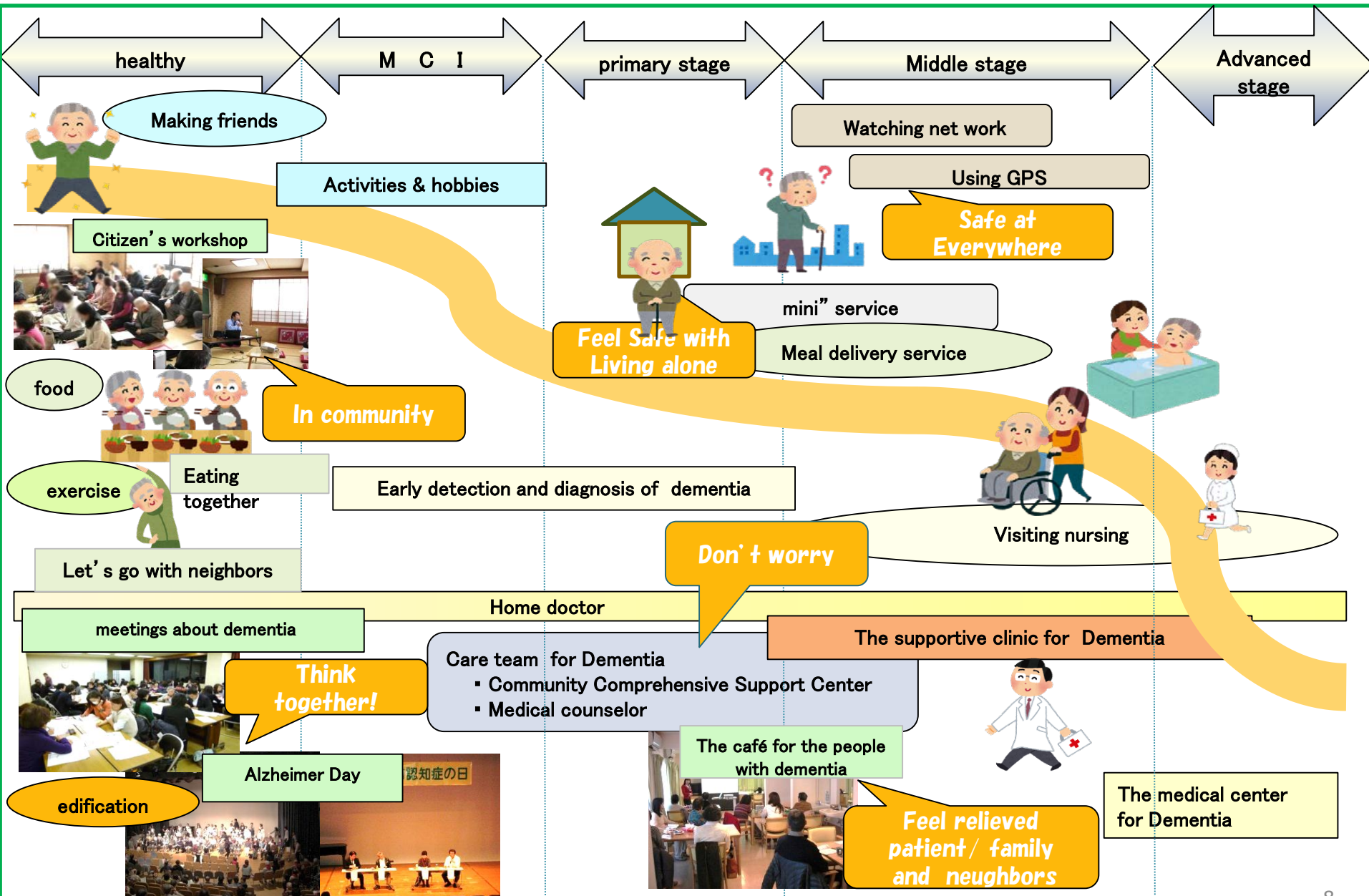
not certified 5,140  
 certified 2,142

dementia (-) 1,087  
 dementia with family 767  
 dementia, alone 288



\* the dementia on this map means that the degree of independence in one's everyday life is over II a  
 \*referring residence registration

# Approach of Dementia Care in Kunitachi City





# The 56 visiting care cases of dementia patients who are living alone

## 【findings in this study】

- ① Cooperation with medical care
  - \*inform the doctors of accurate patient status
  - \* the need of medical care on dementia
- ② Family support
  - \*mitigate care burden
  - \*resolve conflicts among family members
- ③ Recognize the changes of patient status
  - \*who should notice them,  
and to whom convey the information
- ④ Need of community support
  - \*person with dementia can't live alone  
with the help of present social support  
(sometimes it is not enough)

## (Improvement in Care management)

- ★ Regular exchange of information with Care manager
  - Recognize the change of the status
- ★ Level up the technique of dementia care
  - Specialist (Dr.) for dementia care
  - Case management meeting
- ★ Cooperation among the Community
  - for continuous support  
(inhabitants/medical staff/ care staff  
/local government)

# Management for wandering elderly with dementia

## ◆ Analysis of 13 wandering person with dementia

### (There is reasons for going out & wandering)

#### ▪ Desire

「to go working to the office」

「to do exercise」

「to eat breakfast」

#### ▪ Lose one's way

「can't return from the post office」

#### ▪ Delirium

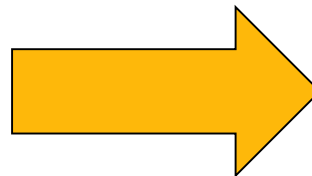
#### ▪ Other reasons

(ex.)

▪ go out with his business bag

▪ feel hungry & go shopping for breakfast

▪ go out by bicycle for exercise



### (Management)

#### Using GPS

(in one's bag)

#### Watching

( inhabitants, shopkeepers, police, care managers, etc.)

#### Food delivery service

(to supply daily food )

#### Daytime Care

(place to stay)

#### Working with

Offices of Care giving

Local government

**Aiming at Community**

**where person with Dementia can go out & wandering safely**