

Global Dementia Legacy Event Japan session3

“Omuta city Dementia Care Community Promotion” - to build society where all the people can live together with dignity even suffering dementia

Key words :

intergenerational exchange and SOS network

Rumiko Otani



An Overview of Omuta City, Fukuoka Prefecture in Japan



Omuta City, Fukuoka



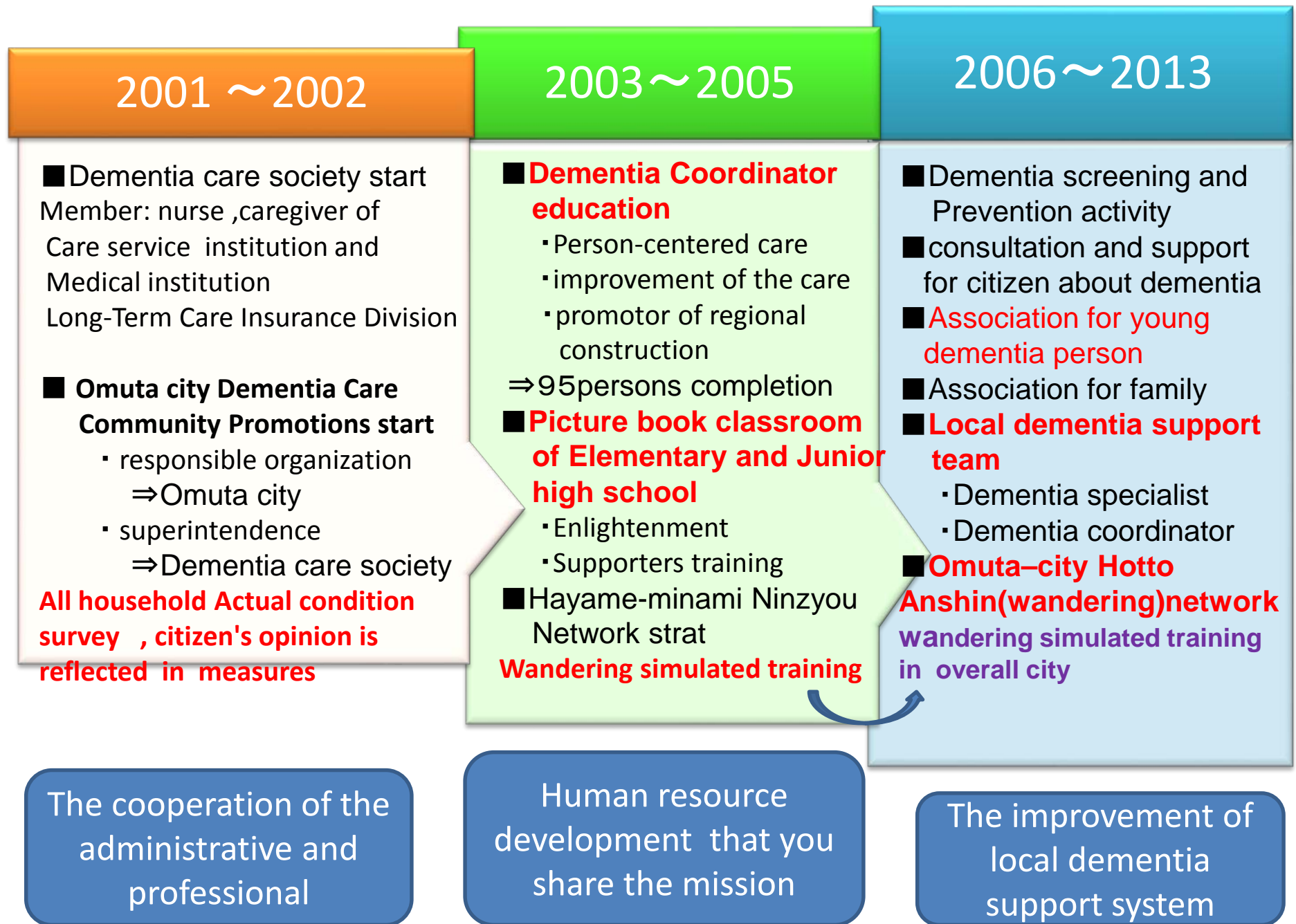
Miyahara coal mine (An Important Cultural Property)

Omuta, once a city of coal mines (Miike coal mine was closed in 1997), is now evolving into a people-oriented community.



- Total Population of Omuta City
From approx. 210,000 (in 1960)
approx. **121,098** (October, 2014)
- Aged Population 39,811
Percentage of Aged Population: 32.9 % (October, 2014)
Percentage of Population Aged 75+: 17.6 %
- People with Certification of Needed Long-Term Care 7,820
Certificate rate: 19.4% *aged 65+ (August, 2014)
- Total Households: 57,347 (October, 2014)
Household with aged population: 29,550 (51.5%)
Household of an aged single-person: 13,406 (23.4%)
Household in public housing: 4,832 (8.4%)
- Percentage of population belonging to a community center
32.4% (2014)

Omuta-city Dementia Care Community promotion



Hayame-minami Ninjyou Network

The cooperation of local residents, Younger generation and Long-term Care service institution



To watch,
and support
each other



Omuta city “Hotto Anshin” (wandering) Network

Wandering simulated training since 2004

“wandering” is OK!

Regional Development of Society in which everyone can wandering in easy and safety even dementia

Spread understanding of dementia in the whole area and usually watch them and raise awareness to support them.

Make safety net having high effect at the time of the disappearance outbreak

2014 : 11th wandering simulated training
3000 citizens participated

<Flow of Wandering simulated training>



Transmission of information from police

Communication method

Tel

FAX

Mail

From each office to local residents**



[所在地不明者情報]	
氏名: 大牟田 一部	年齢: 86歳 性別: 男
住所: 大牟田市有明町	
所在不明発覚時の時間(届出): 7月26日 09時 30分 分頃	
上	黄色のジャンパー(フード付き) ハイネックシャツ(色不明)
下	Gパン
所持物	運動靴(紺色の紐入り) セカンドバッグ
その他	その他
身体的特徴:	身長 165 cm 体重 50 kg
髪色:	髪色 やや短
髪型:	髪型 頭頂部がはげている
その他:	その他 眼鏡(上部が壊断)
認知症の有無:	有(程度)
徘徊歴の有無:	有(保護された場所 三里町方面で保護 2年前位前)
不審者の様子:	不審者の様子
特に問題はない	特に問題はない
子の氏名(本人がよく通っていた場所や親戚等)	子の氏名(本人がよく通っていた場所や親戚等)
〇〇クリニック(白川12-34)	〇〇クリニック(白川12-34)
情報提供履歴の有無:	(有)
消防署へのメール発信依頼:	(不要)
<大牟田警察署> 住所: 大牟田市不知火町3丁目8番地 電話: 0944-48-0110	



take the communication "Hello! May I help me?"

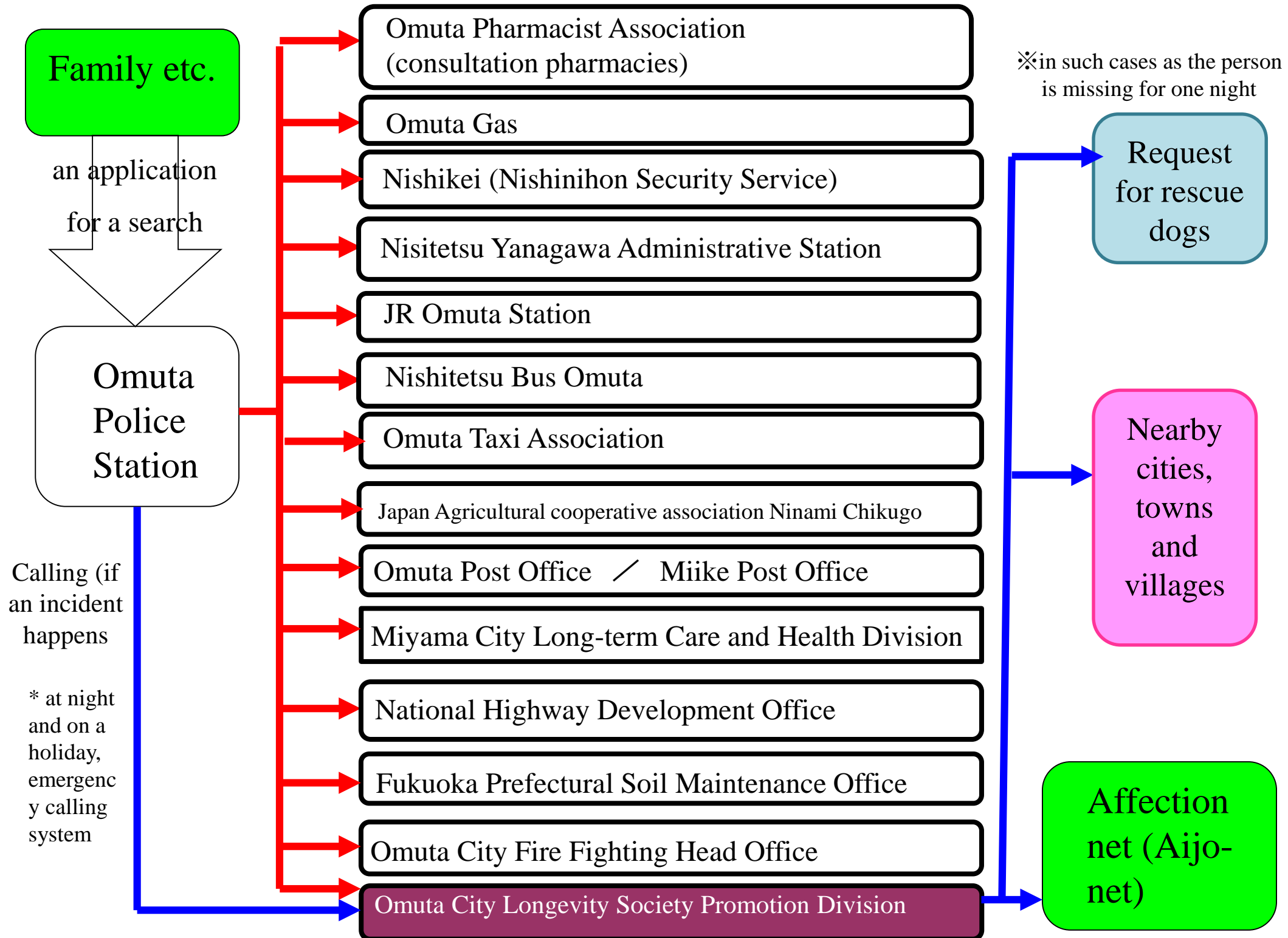
To get Arigato Card from person of Wandering role



Found and care Report to the police



Omuta City SOS Network for Elderly People



Omuta City Longevity Society Promotion Division

Life Support Network

Sending Fax or emails

Long-Term Care Support Specialist Association
Long-Term Care Provider Association

Local Comprehensive Support Center
Long-Term Care Prevention and
Counseling Center

The chief of commissioned
welfare volunteers and the chief
of commissioned child welfare
volunteers in the school district

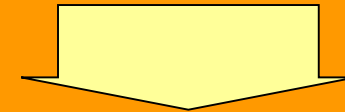
Omuta City Social Welfare Association
Omuta City Challenged People Association
Omuta Medical Association and Dentist
Association

Omuta Shop Keeper Association
etc.

Community Support Network

Sending Fax or emails

Long-Term Care Prevention Centers
and Local Exchange Facilities



Sending Fax or emails

School District Network

commissioned welfare
volunteers and
commissioned child
welfare volunteers

Directors of community centers,
welfare volunteers
Social Welfare Association in
school district
Elderly people clubs, active life
clubs, shops, schools, PTA,
police stations, etc.

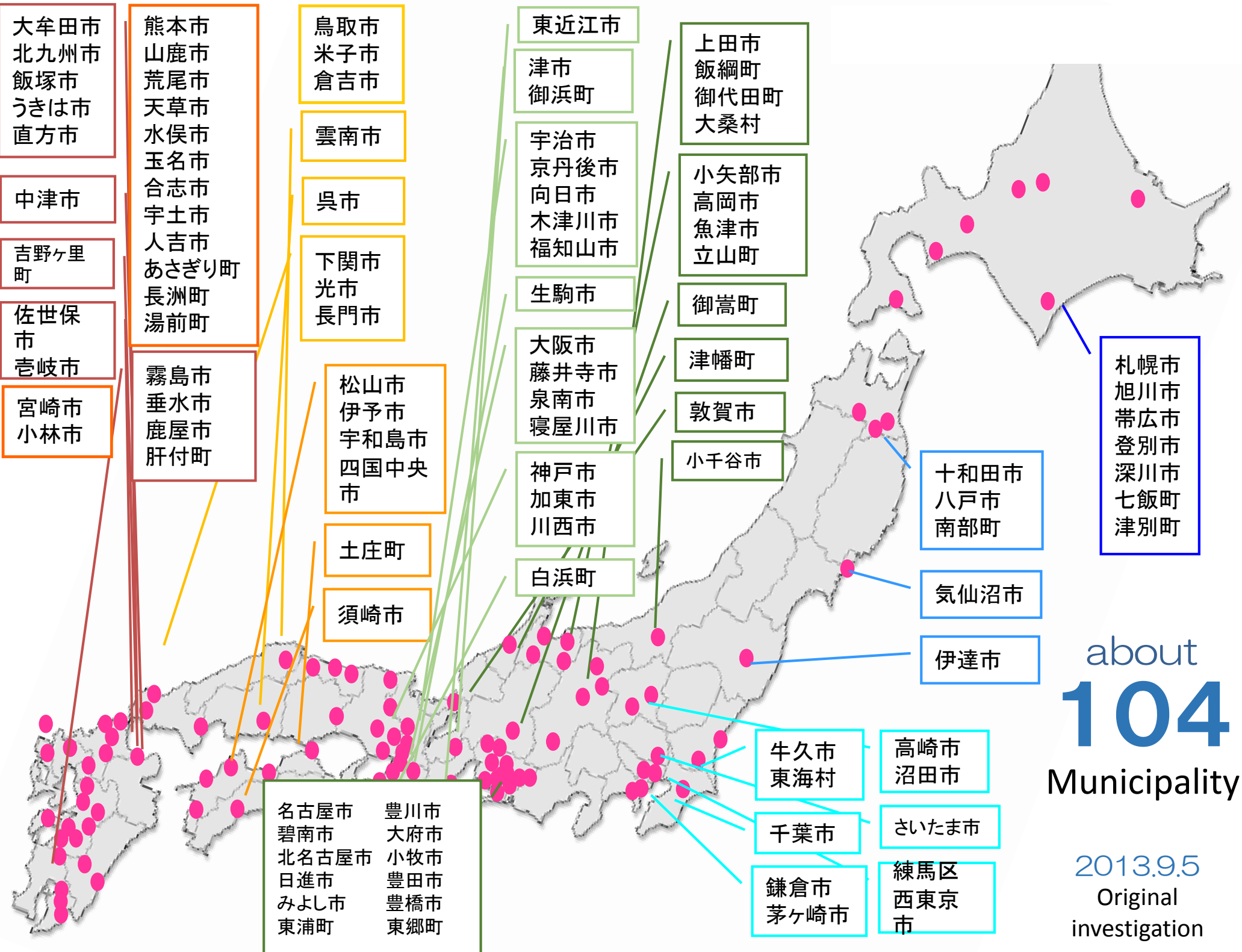
Omuta City SOS Network for Elderly People

(Sample by Omuta police station)

year	2007	2008	2009	2010	2011	2012	2013
Number of the missing person reports	129	134	132	143	106	123	156
The number of use of SOS network	30	20	14	16	20	24	23

※**Exclusion**: Missing persons from the wide area

year	2010	2011	2012	2013
Number of the missing person reports	143	106	123	156
dementia ⇒	16	24	24	24
Number of protected of persons with dementia	112	121	169	138



大牟田市
北九州市
飯塚市
うきは市
直方市

中津市

吉野ヶ里町

佐世保市
壱岐市

宮崎市
小林市

熊本市
山鹿市
荒尾市
天草市
水俣市
玉名市
合志市
宇土市
人吉市
あさぎり町
長洲町
湯前町

霧島市
垂水市
鹿屋市
肝付町

鳥取市
米子市
倉吉市

雲南市

呉市

下関市
光市
長門市

松山市
伊予市
宇和島市
四国中央市

土庄町

須崎市

東近江市

津市
御浜町

宇治市
京丹後市
向日市
木津川市
福知山市

生駒市

大阪市
藤井寺市
泉南市
寝屋川市

神戸市
加東市
川西市

白浜町

上田市
飯綱町
御代田町
大桑村

小矢部市
高岡市
魚津市
立山町

御嵩町

津幡町

敦賀市

小千谷市

十和田市
八戸市
南部町

気仙沼市

伊達市

札幌市
旭川市
帯広市
登別市
深川市
七飯町
津別町

名古屋市
碧南市
北名古屋市
日進市
みよし市
東浦町

豊川市
大府市
小牧市
豊田市
豊橋市
東郷町

牛久市
東海村

千葉市

鎌倉市
茅ヶ崎市

高崎市
沼田市

さいたま市

練馬区
西東京市

about
104
Municipality

2013.9.5
Original
investigation

Picture-book classroom in Elementary and Junior high school 2004~2014

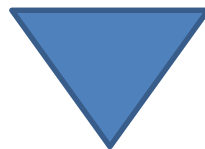


■ The number of students who attended : 7492

(without '04, '14)

■ Elementary school which have it every year : 9 / 21 school

■ Junior high school which have it every year : 9 / 11 school



Intergenerational exchange
Participation in community development

Changes in the perception of elementary and junior high school students for dementia and the elderly(after classroom)

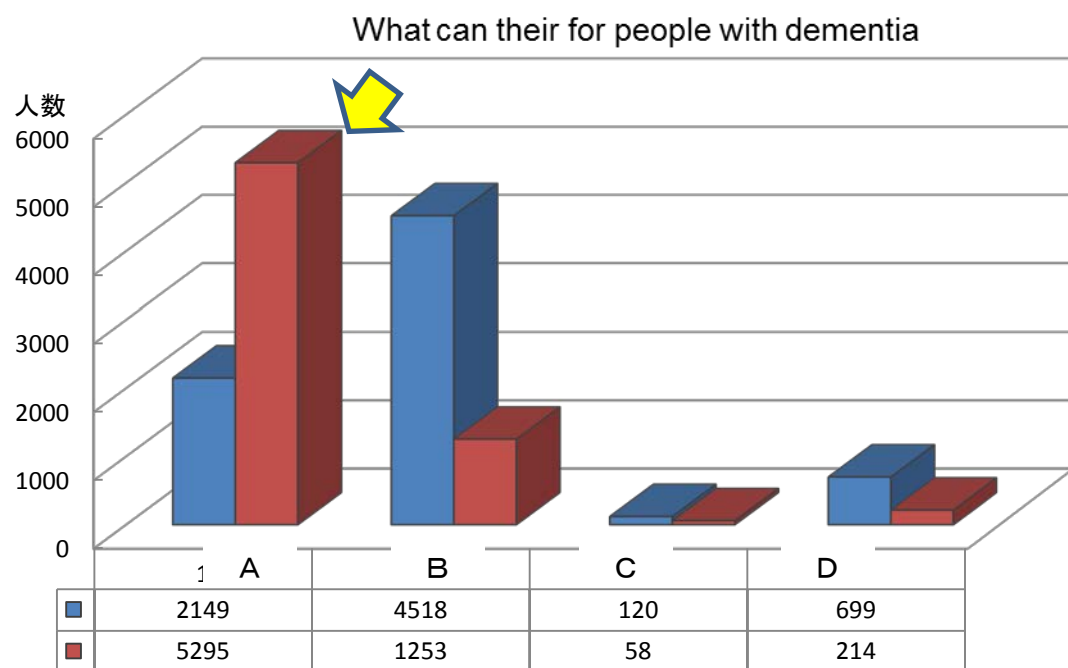
Q. Do you think that you can support something to people with dementia by yourself?

A: Yes, I know what to do.

B: Yes, but I don't know what to do

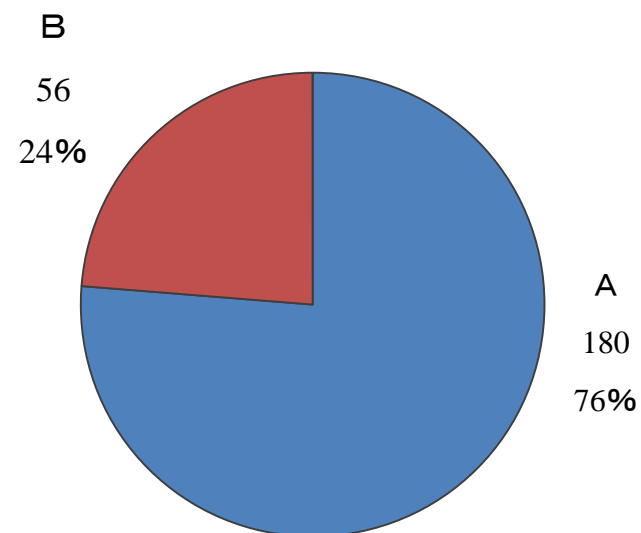
C: No, I don't think so

D: I don't understand



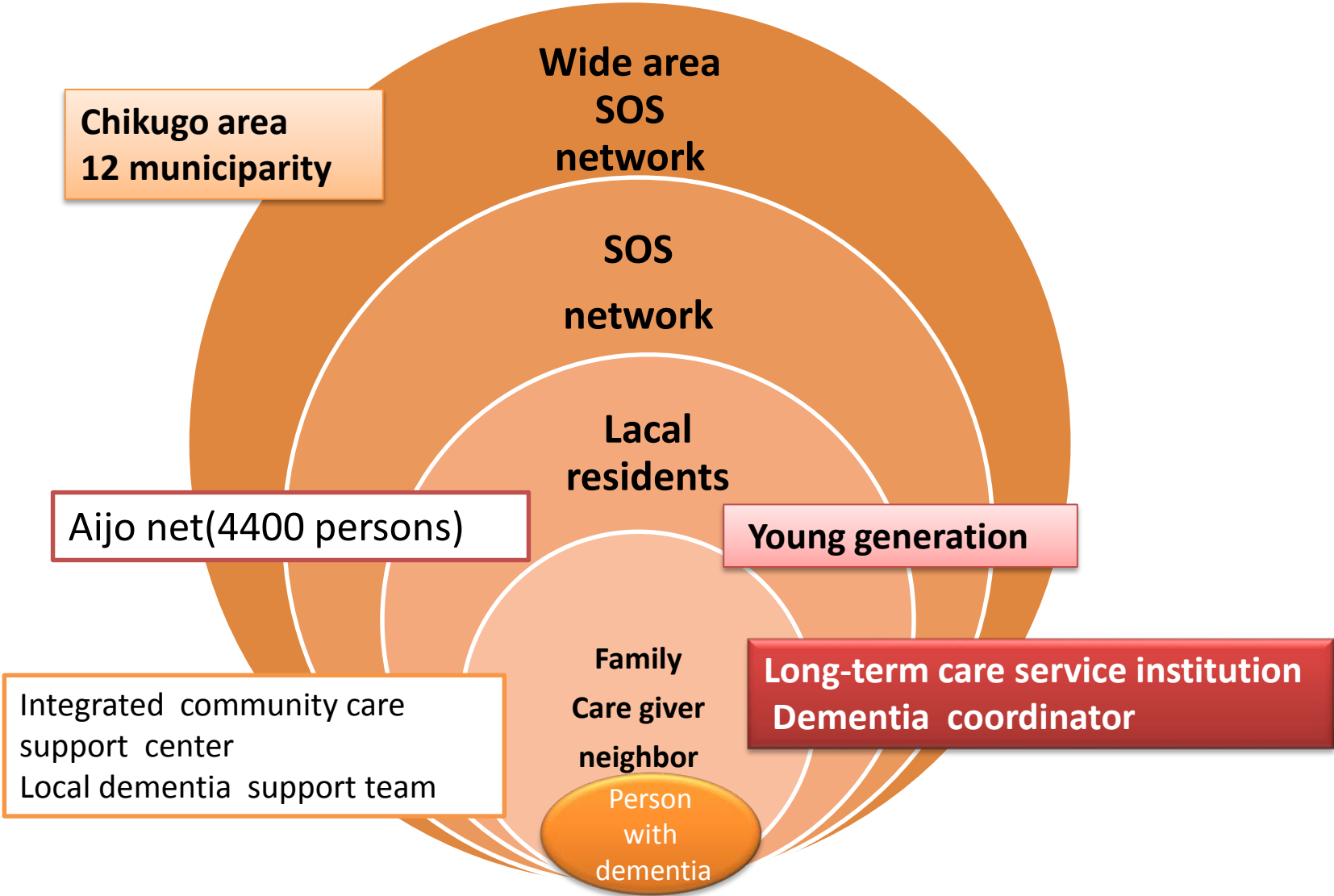
The Students who understand the support for people with dementia specifically has increased ,after picture classroom.

Q. Did you support for people with dementia by yourself in rural community?



As a result of having followed all students of Yoneo junior high school after learning in 1-2 half a year '07, 76% students performed the community activities.

Regional Development of Society in which everyone can wandering in easy and safety even dementia



Basic policy : Person-centard care and life support