

Dementia Prevention and Care in Japan

November 5th, 2014



Tadayuki MIZUTANI

Director, Office for Dementia and Elder Abuse Prevention
Health and Welfare Bureau for the Elderly
Ministry of Health, Labour and Welfare (MHLW) in Japan

*In 2004,
the Japanese Government
modified the Japanese
terminology for "Dementia"*

痴
呆

(Chihō)

Idiocy
Stupidity



認
知
症

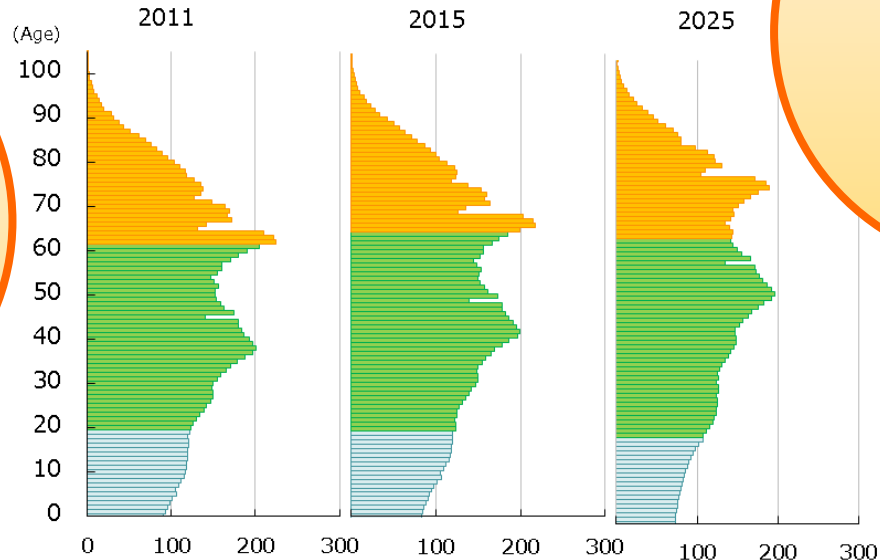
(Ninchishō)

Cognition
Disorder

Aging Society and Dementia in Japan

super aging
society

24.1%



dementia

15%

MCI

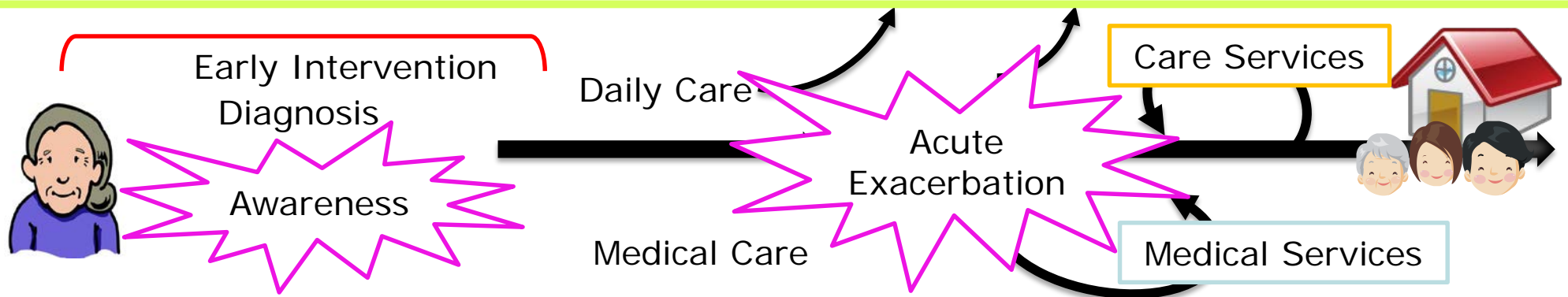
13%

- Proportion of the elderly in Japan is the highest in the world.
- Prevalence rate of **dementia** is estimated to be **15%** (12-17%, 95% CI), higher than any previous reports in Japan.
- Prevalence rate of **MCI** is estimated to be **13%** (10-16%, 95% CI).

Orange Plan

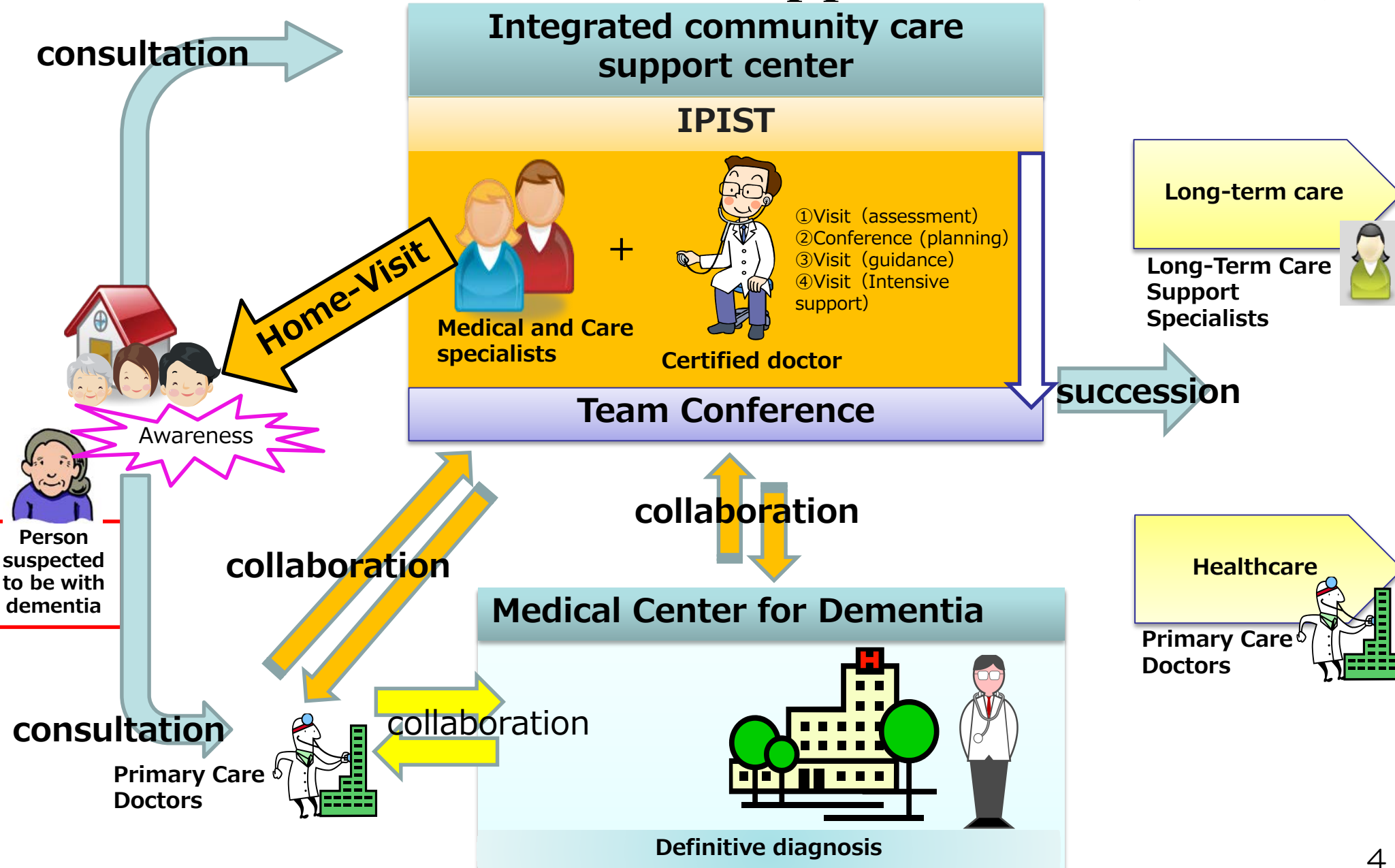
Five-Year Plan for Promotion of
Dementia Measures (2013-2017)

1. Development of Standard Dementia Care Pathway
2. Earlier Diagnosis & Intervention
3. Improved Health Care Services to support Living in Community
4. Improved LTC Services to support Living in Community



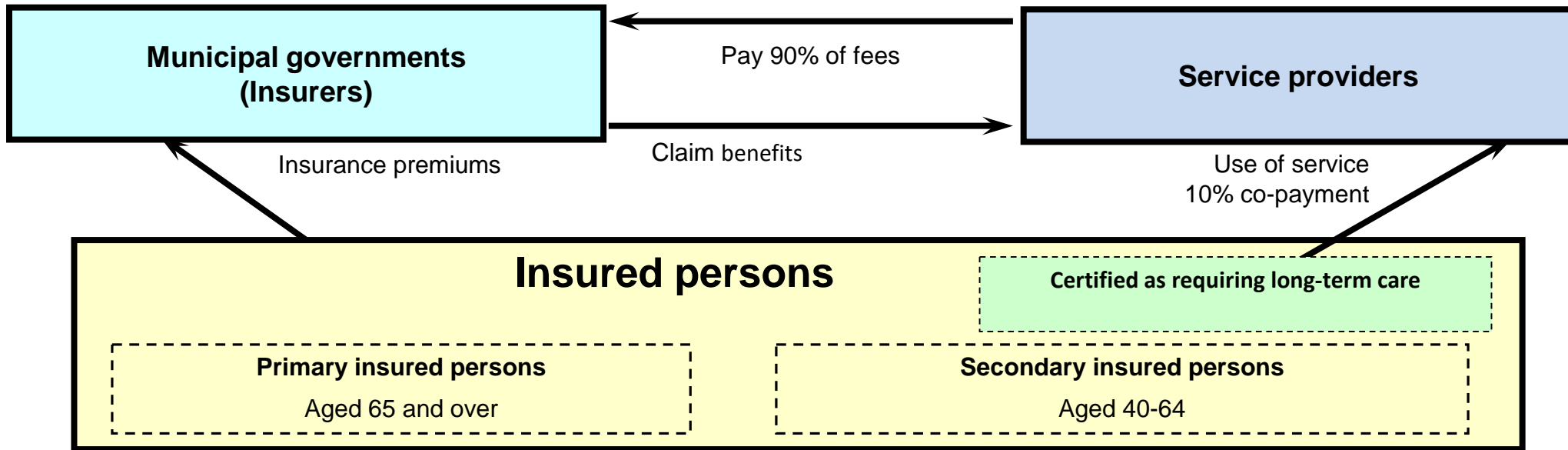
5. Better Support for Daily Living and Family Caregivers
6. Reinforcement of Measures for Younger Onset Dementia
7. Training of Personnel Engaged in Care Services

Initial-Phase Intensive Support Team (IPIST)



Structure of the Long-Term Care Insurance System

【How the long-term care insurance system works】



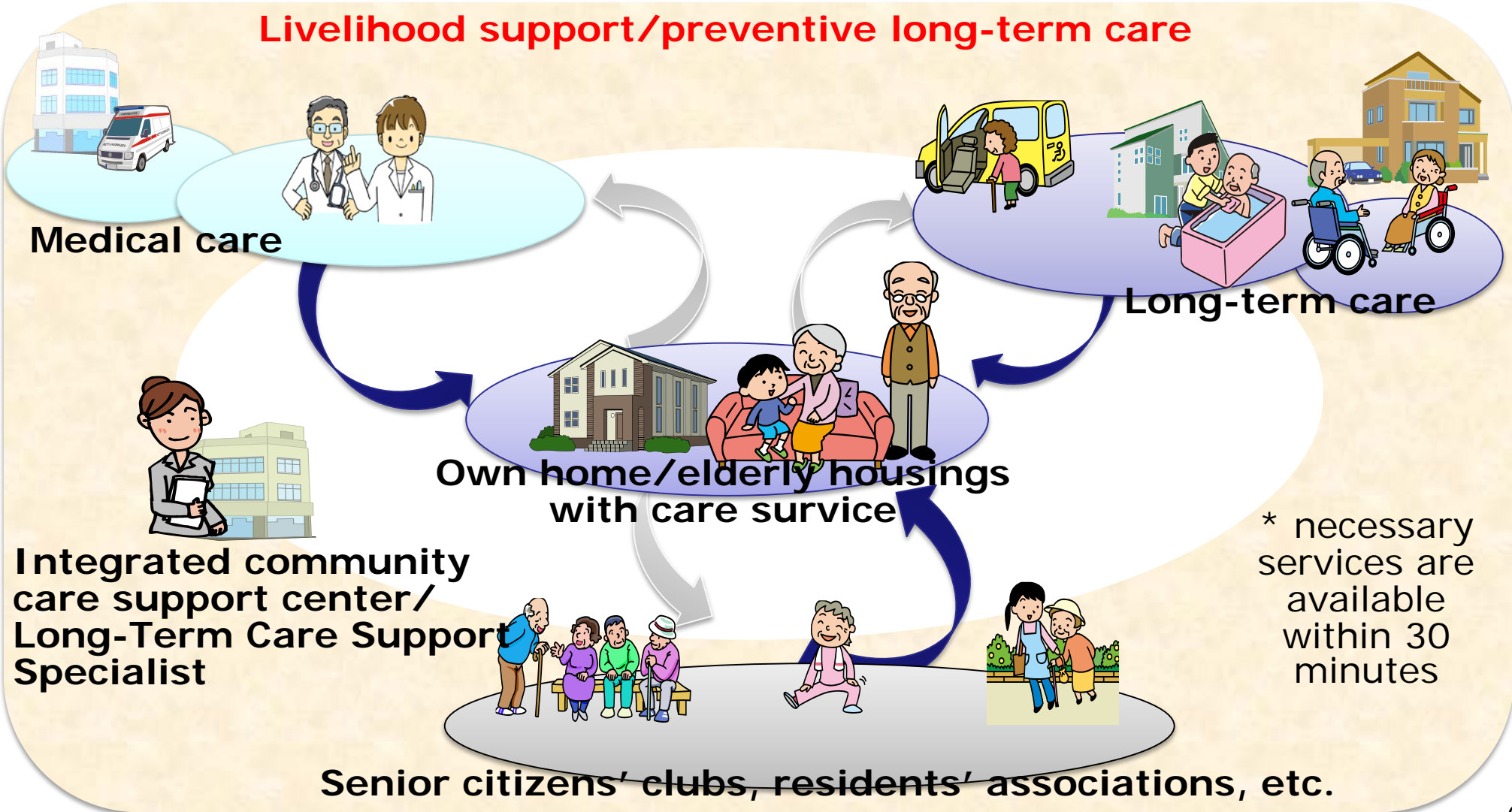
【Examples of the long-term care services】

- Home-visit long-term care
 - ※ Provided by Home Helpers
- Home-visit nursing
 - ※ Medical care is provided by nurses
- Outpatient day long-term care
 - ※ By visiting Day Service Centers
- Short-stay services
 - ※ Short-term admission to facilities
- Group home for persons with dementia
- Facility services

Integrated Community Care System

To live in community in a pleasant and familiar environment

Livelihood support/preventive long-term care





“Dementia Supporters”

Training Program

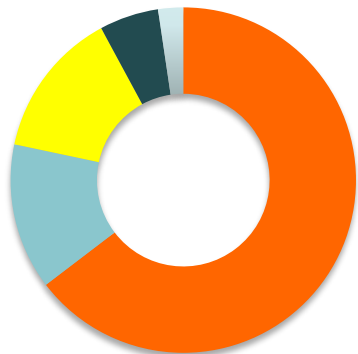
5.5 million
Participants

as of Sep, 2014

-people of every generation, every occupation
are becoming



“Dementia Supporters”



- Community
- Office
- School
- Public office
- LTC Service Providers

